

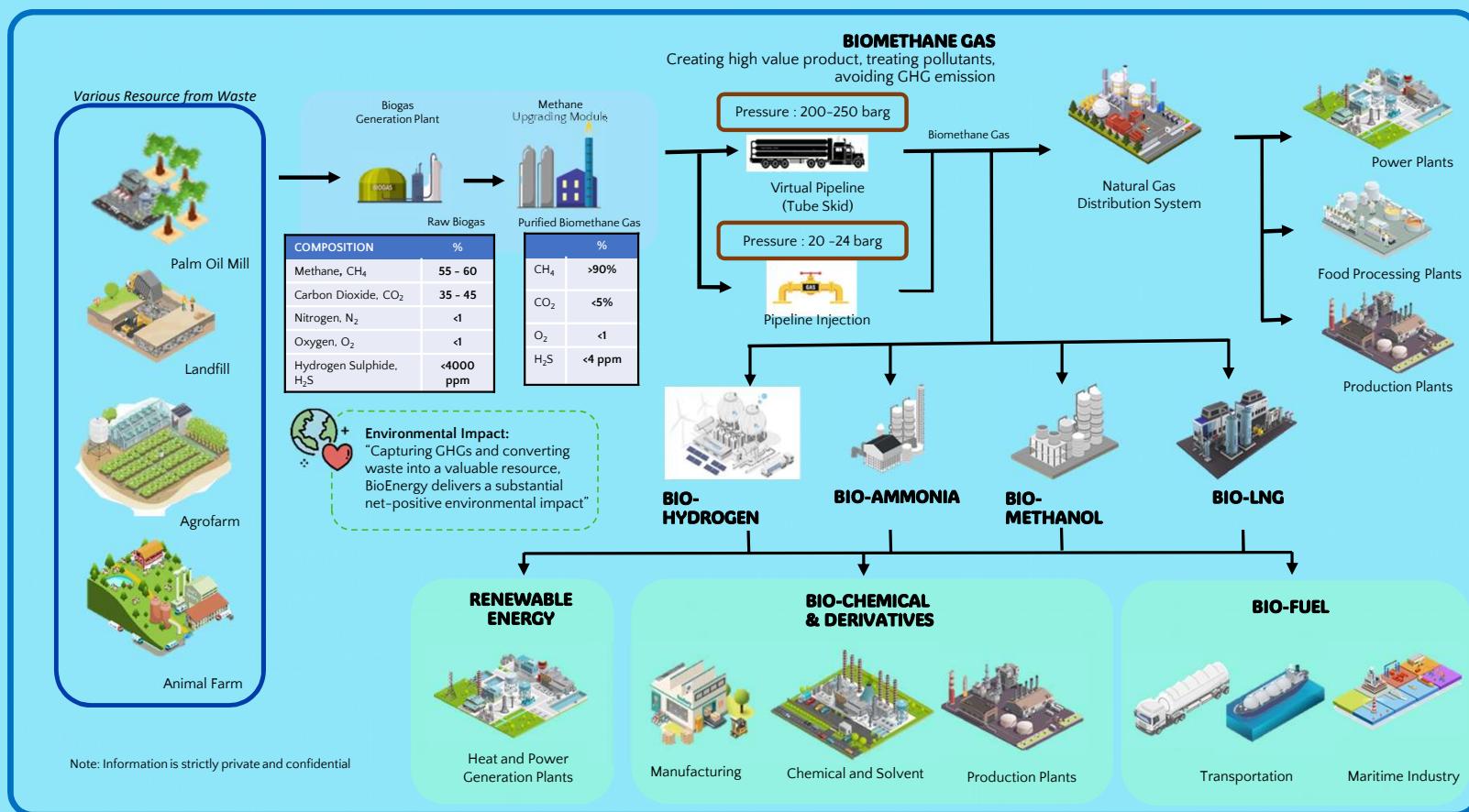


Opportunities for Biomethane Project Development and Integration into Indonesia's Natural Gas Pipeline Network

This topic explores the potential to develop biomethane projects in Indonesia using organic waste and renewable resources. It also looks at how biomethane can be purified and injected into the existing natural gas pipeline to support cleaner energy and reduce dependence on fossil fuels.

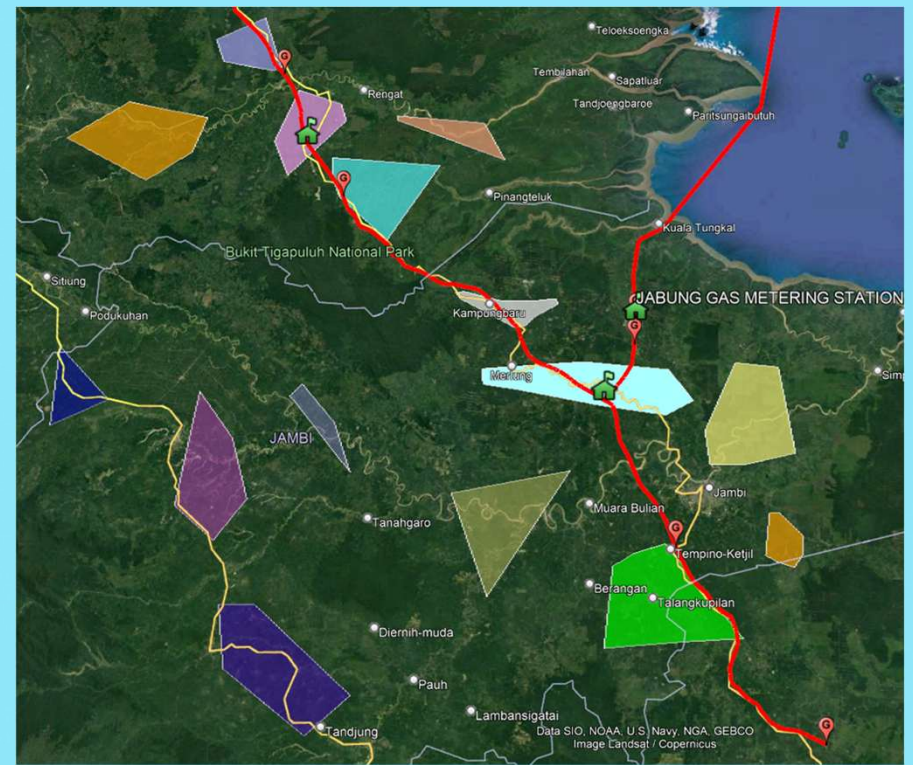
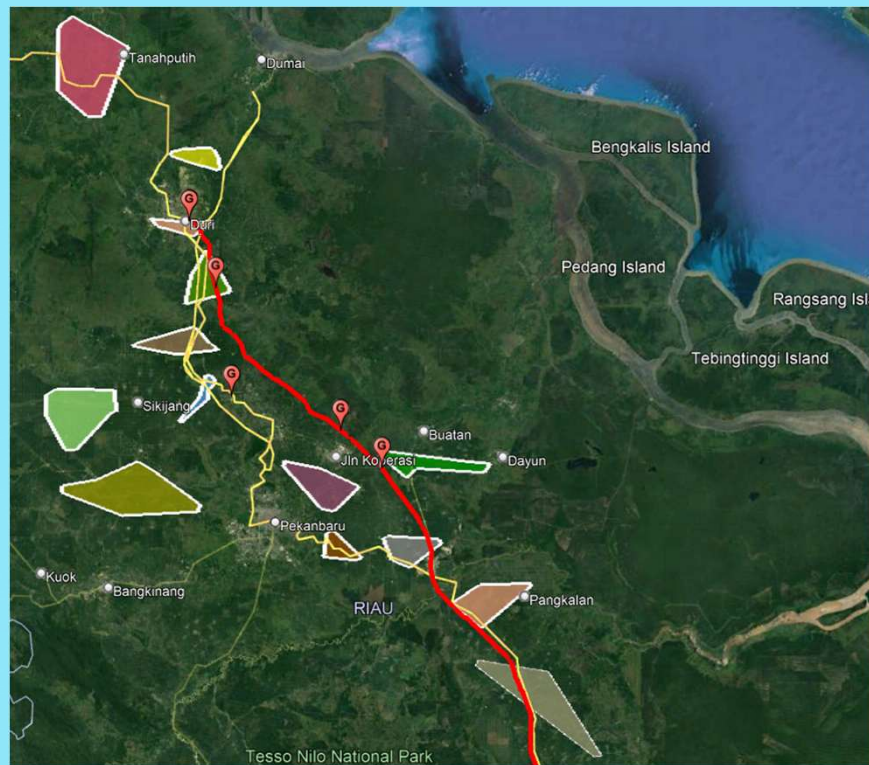
Prepared By: Dr Amran Yusof (PT reNIKOLA Primer Energi)

Bio-Energy Concept

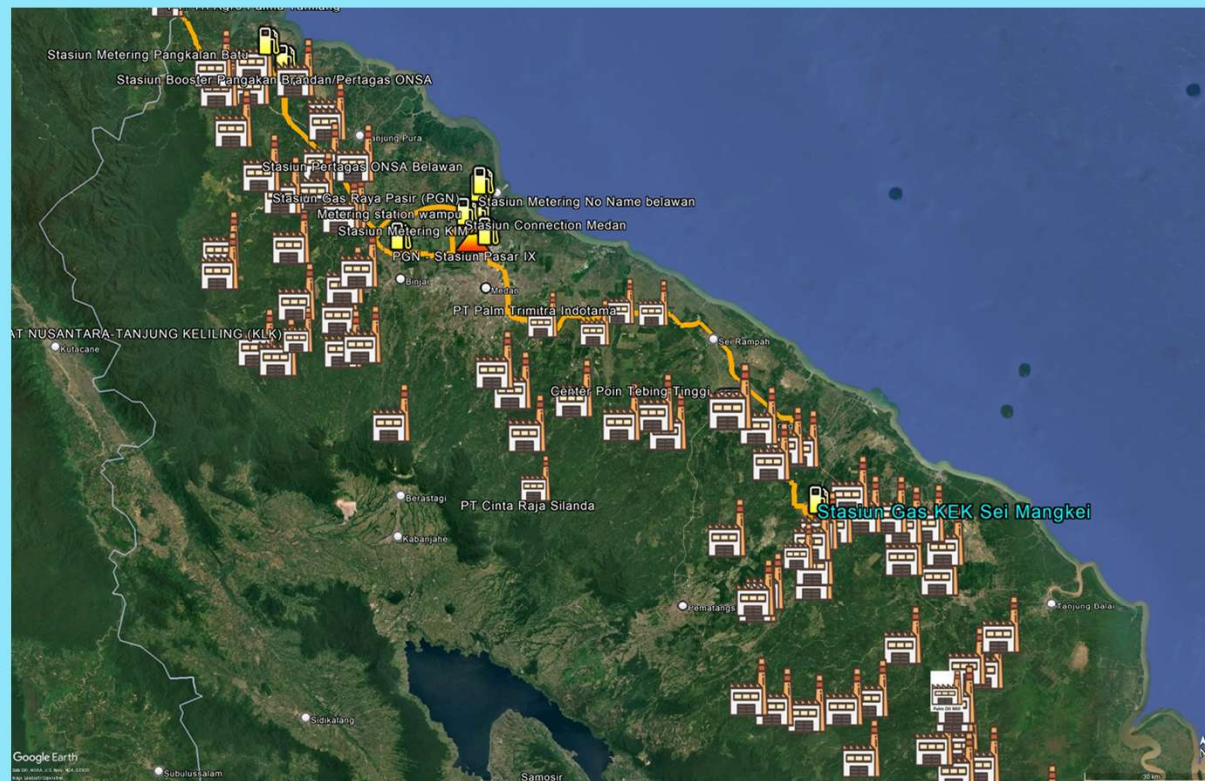


Pipeline and POMs Mapping in Sumatera

EXAMPLE: GRISSIK-DURI TRANSMISSION LINE

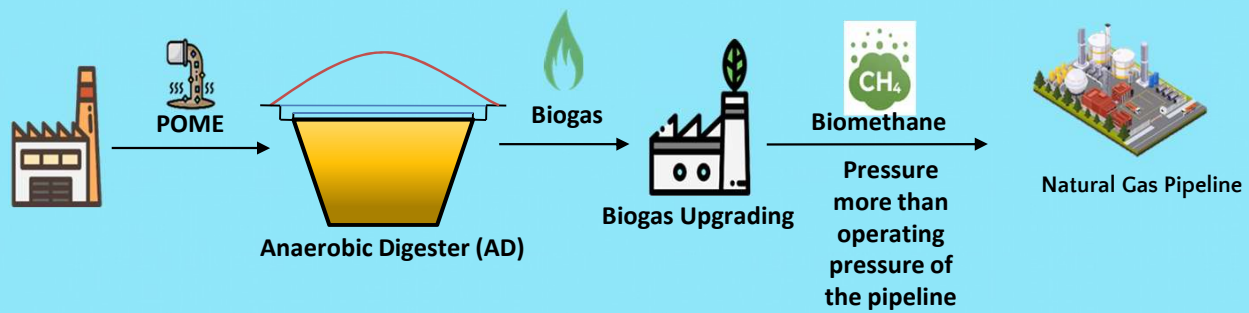


EXAMPLE: North Sumatera

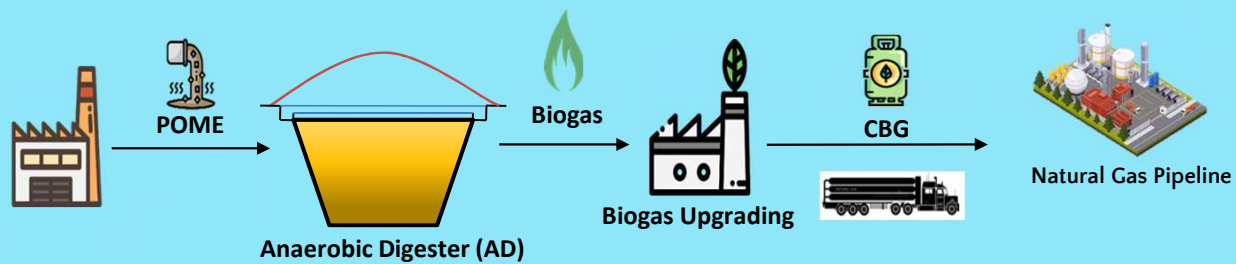


Biomethane Injection Concept

Direct Injection



Compress and Inject





TERIMA KASIH