

PRESENTED AT



# Developing a Smart, Green & Sustainable Industrial City in Central Java

**Marfan Trihartiko**

General Manager – Operations, IT & Services  
KEK Industropolis Batang



# KEK Industropolis Batang Milestone



- 30 Juni 2020 Presiden RI pertama kali meninjau lokasi Kawasan Industri Terpadu Batang
- 17 November 2020 Pemerintah menerbitkan Perpres 109/2020 Kawasan Industri Terpadu Batang sebagai Proyek Strategis Nasional
- 11 Desember 2020 Berdirinya PT Kawasan Industri Terpadu Batang, konsorsium 3 BUMN dan 1 Perusa

- 21 April 2021 Kunjungan kedua Presiden RI untuk meninjau perkembangan infrastruktur
- 7 Mei 2021 Dimulainya Pembangunan Reservoir Air Baku & Bendungan.
- 20 Mei 2021 Groundbreaking Tenant Pertama KCC Glass Indonesia

- 8 Juni 2022 Kunjungan ketiga Presiden RI untuk Seremoni Implementasi Industri Baterai Listrik Terintegrasi
- 31 Agustus 2022 Pemerintah menerbitkan Perpres 106/2022 tentang Percepatan Pembangunan Kawasan Industri Terpadu Batang.
- 3 Oktober 2022 Kunjungan keempat Presiden RI untuk Groundbreaking Ceremony Wavin Manufacturing Indonesia, tenant pertama dari Eropa

- 9 November 2023 Kementerian PUPR mulai mengembangkan Phase 2 seluas 400 Ha
- 21 November 2023 Penandatanganan PPTI tenant pertama di Phase 2, Wanxinda Group Indonesia di lahan seluas 98 Ha dan Xiang Jiang Group (NCH) seluas

- 29 Mei 2024 Kunjungan kelima Presiden RI dalam rangka inspeksi Kawasan.
- 25 Juli 2024 Peresmian Operasional KITB

- 08 Januari 2025 Groundbreaking PT Longteng
- 19 Maret 2025 Komisioning Sumber Graha Sejahtera
- 20 Juni 2025 Operasional Terminal Multi Purpose
- 20 Maret 2025 Peresmian KEK Industropolis Batang oleh Presiden RI

**BUMN** UNTUK INDONESIA

**INDONESIA SEZ**  
DEWAN NASIONAL KAWASAN EKONOMI KLASUS

# About KITB

Masterplan 4,300 Ha

PRESENTED AT:



We make a long way forward  
PIPELINE for your business growth  
ENERGY SUPPLY

**Cluster 2 - Innovation**  
Innovation Estate & Township  
TOTAL AREA : 800 Ha

**Cluster 1 - Creation**  
Industrial Estate & Township  
TOTAL AREA : 3,100 Ha

Phase 1 of Cluster 1  
TOTAL AREA : 450 Ha

Phase 2 of Cluster 1  
TOTAL AREA : 400 Ha

Next  
Development  
TOTAL AREA : 1,000  
Ha

**Cluster 3 - Leisure**  
Township & Theme Park  
TOTAL AREA : 400 Ha

**Future  
Development**  
- Residential  
- Golf Course  
- Commercial

Trans Java  
Highway

**BUMI** UNTUK  
INDONESIA



**INDONESIA  
SEZ**  
DEWAN NASIONAL  
KAWASAN EKONOMI KHUSUS

# OUR TENANTS

PRESENTED AT:

**pipes** 2025  
PERTAGAS INTEGRATED PIPELINE AND ENERGY SUMMIT



**KAWASAN INDUSTRI TERPADU BATANG**

Member of Danareksa



**KCC GLASS Corporation**

The Largest Glass Industry in Southeast Asia with an area of 43 Ha South Korea

**PT. Conas Industri**

**YQ LAI YIH GROUP**

**HOKA and Converse Shoe Industry** with a workforce absorption reaching 12,000 people Taiwan










Medical equipment industry based on radio-pharmacy to detect cancer Indonesia

**IMS**

**INTERSKALA MEDIKA SOLUSINDO**

**IMI Medika**

**wavin**

The first European Tenant in KITB Netherlands

**SEG SOLAR**

The First Tenant operating in the field of sustainable energy

**WST**

# State of The Art Facilities



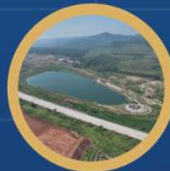
**Instalasi Pengolahan Air Limbah**  
Kapasitas 18.000 m<sup>3</sup>/hari



**Instalasi Pengolahan Air Bersih**  
Kapasitas 285 L/s



**Tempat Pengolahan Sampah Terpadu**  
Kapasitas 3 ton/hari



**Reservoir Air Baku**  
Kapasitas 1.000.000 m<sup>3</sup>



**Pematangan Lahan**  
Fase 1 (450 Ha) & Fase 2 (400 Ha) Fase 3 (140 Ha)



**Jalan Kawasan**  
Sepanjang 50 KM



**10 Rumah Susun**  
Solar Panel Kapasitas 120,9 Kva/tower



**Akses Terminal Multipurpose**



**POS LAYANAN TERPADU**



**LNG oleh PGN**  
Kapasitas hingga 25 MMSCFD



**Listrik oleh PLN**  
Kapasitas hingga 2x60 MVA



**Dry Port oleh KAI**



**Terminal Multi Purpose oleh Pelindo**



**Simpang Susun**  
Akses langsung menuju Tol Trans Jawa



**KANTOR ADMINISTRATOR KEK**



**Command Center**



**ICT**



**Peralatan Pemadam Kebakaran**



**Jalur Distribusi Utilitas Fase 2**

**BUMN** UNTUK INDONESIA

**INDONESIA SEZ** DEWAN NASIONAL KAWASAN EKONOMI KHUSUS

**KAWASAN INDUSTRI TERPADU BATANG**  
Member of Danareksa

# Integrated Smart Industrial City in the Making



**Mission as per UUD 1945**  
*"Mencerdaskan Kehidupan Bangsa"*

**Automation & Digitalization**

- 1 - Enhanced Resident & Visitor Experience**
- 2 - Competitive Advantage driven by Innovation & Monetization**
- 3 - Enhance Operational Efficiency**

# Sustainability Pillars

## KEK Industropolis Batang Sustainability Pillars



### Circularity – Zero Waste

- Preparation of Standard Criteria & TOR of Waste Management
- Circular Economy Study
- Combination of Waste Management Process as part of Circularity - Zero Waste
- Capacity Building
- Waste Management Strategic Partnership



### Renewable Energy

- Capacity Building
- Use of Solar PV in KITB
- **Decarbonization (reducing carbon emissions and reducing dependence on fossil fuels)**



### ICT Smart Development

- Integrated Digital Infrastructure Dev.
- IoT Implementation for Real-Time Monitoring
- Smart City App. for Easy Access to Services – Capacity Building for ICT Human Resource
- Use of Technology & Data Analytics for Decision Making
- Integration with Energy & Waste Management Systems



### Social Sustainability

- Safe Transportation Access
- Affordable Workers Housing nearby
- Universally Designed Facility
- Community Engagement Program
- Equity & Inclusion Program

# What KITB is Measuring?



## Operational Efficiency Metrics

- Resource Utilization Rate
- Downtime Reduction
- Automation Rate
- Process Throughput Time



## Digital Engagement Metrics

- Platform Utilization Rate
- Real-Time Alerts & Response Rate
- Customer Portal Satisfaction Score



## Innovation and Growth Metrics

- Adoption Rate of New Technologies
- Collaboration Metrics
- Scalability Index



## Sustainability Metrics

- Energy Efficiency (kWh/Unit Produced)
- **Carbon Emissions Reduction**
- Waste Reduction Rate
- **Green Energy Usage**



## Financial Performance Metrics

- Cost Savings from Digital Solutions
- Return on Investment (ROI) for Technology Integration
- Revenue Growth from Smart Services



## Compliance Metrics

- Regulatory Compliance Rate
- Sustainability Certification Achievements

# Natural Gas as Enabler for Green & Low Emission Industrial Estate in KITB



Align with KITB's mission in establishing green industrial estate, part of decarbonization strategy and reducing coal dependency (~50% less emission, significantly less SOx, NOx, and other particulates)



**Synergy between KITB – PERTAGAS – Government** : to establish a modern and sustainable energy ecosystem



Clean Energy is a **magnet for FDI**, particularly chemicals, food, and other heavy manufacturers

Natural Gas = **ENABLER** for Energy Efficient, low emission based industrial ecosystem

KITB is ready to be the **biggest green industrial hub in Central Jawa!!**



# Natural Gas Infrastructure by Pertamina in KITB



Digunakan sebagai fasilitas tap-off dan distribusi gas untuk tenant kawasan industri.

Infrastruktur awal yang disiapkan untuk mendukung pasokan gas ke tenant-tenant prioritas.

Terletak di selatan rusun KITB, dan utara Tol Semarang-Batang.

Luas area sekitar 4.200 m<sup>2</sup>.



# Demand Projection KITB



Tenant Name	Industry	Status	Gas Demand	Area (Ha)
KCC Glass Indonesia	Glass	Operation	250.000 MMBTU/bln	46
Rumah Keramik Indonesia	Ceramic	Operation	180.000 MMBTU/bln	13
Hormel Pronas	Food	Construction	16.500 MMBTU/bln	4
Xiang Jiang Group	Textile	Construction	10.000 MMBTU/bln	17
Racking Factory	Racking	Pre-PPTI	5.000 MMBTU/bln	5,7
Food Manufacturer	Food	Pre-PPTI	1.100 MMBTU/bln	6,5
Jayamas	Medical Equipment	Commissioning	TBD	3,6
Battery Manufacturer	Baterai	Prospect	86.000 MMBTU/bln	TBD

# Thank You



[www.grandbatangcity.co.id](http://www.grandbatangcity.co.id)



Grand Batang City

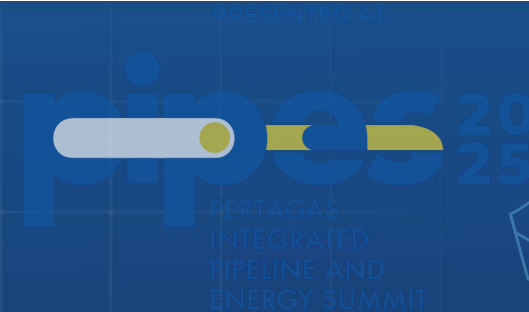


grandbatangcity



@GrandBatangCity

Semarang Batang Toll Road KM 371 +800, Ketanggan,  
Gringsing, Batang, Central Java 51281



KAWASAN  
INDUSTRI TERPADU  
BATANG

Member of Danareksa

**BUMN** UNTUK  
INDONESIA



**INDONESIA**  
SEZ  
DEWAN NASIONAL  
KAWASAN EKSPOR IMPOR